

South View Community Primary School

Accessibility policy



At South View Community Primary School, our values reflect our commitment to a school where there are high expectations of everyone. Children are provided with high quality learning opportunities so that each child attains and achieves all that they are able to. Everyone in our school is important and included. We promote an ethos of care and trust where every member of our school community feels that they truly belong and are valued. We work hard to ensure there are no invisible children here, recognising everyone's uniqueness and success. We recognise learning in all its forms and are committed to nurturing lifelong learners. We are a safe school, committed to improving children's confidence and self-esteem. We know that safe and happy children achieve.

This Accessibility Plan is drawn up in compliance with current legislation and requirements as specified in Schedule 10, relating to Disability, of the Equality Act 2010. School Governors are accountable for ensuring the implementation, review and reporting of progress of the Accessibility Plan over a prescribed period.

The Equality Act 2010 replaced all existing equality legislation, including the Disability Discrimination Act. The effect of the law is the same as in the past, meaning that "schools cannot unlawfully discriminate against pupils because of sex, race, disability, religion or belief and sexual orientation".

According to the Equality Act 2010, a person has a disability if:

- (a) He or she has a physical or mental impairment, and
- (b) The impairment has a substantial and long-term adverse effect on his or her ability to carry out normal day-to-day activities.

The Accessibility Plan is structure to complement and support the school's Equality Objectives, and will similarly be published on the school website. We understand that the Local Authority will monitor the school's activity under the Equality Act 2010 (and in particular Schedule 10 regarding Accessibility) and will advise upon the compliance with that duty.

Objectives

South View CP School is committed to providing an environment that enables full curriculum access that values and includes all pupils, staff, parents and visitors regardless of their education, physical, sensory, social, spiritual, emotional and cultural needs. We are committed to taking positive action in the spirit of the Equality Act 2010 with regard to disability and to developing a culture of inclusion, support and awareness within the school.

The school recognises and values parent's knowledge of their child's disability and it's effect on their ability to carry out everyday activities and respects the parent's and child's right to confidentiality.

The South View Primary School Accessibility Plan shows how access is to be improved for disabled pupils, staff and visitors to the school within a given timeframe and anticipating the need to make reasonable adjustments to accommodate their needs where practicable.

The Accessibility Plan contains relevant and timely actions to:

- Increase access to the curriculum for pupils with a physical disability and/or sensory impairments, expanding the curriculum as necessary to ensure that pupils with a disability are as equally prepared for life as the able-bodied pupils; (if a school fails to do this they are in breach of their duties under the Equalities Act 2010); this covers teaching and learning and the wider curriculum of the school such as participation in after-school clubs, leisure and cultural activities or schools visits – it also covers the provision of specialist or auxiliary aids and equipment, which may assist these pupils in accessing the curriculum within a reasonable timeframe;
- Improve and maintain access to the physical environment of the school, adding specialist facilities as necessary – this covers improvements to the physical environment of the school and physical aids to access education within a reasonable timeframe;
- Improve the delivery of written information to pupils, staff, parents and visitors with disabilities; examples might include hand-outs, timetables, textbooks and information about the school and school events; the information should be made available in various preferred formats within a reasonable timeframe.

The South View Community Primary School Accessibility Plan relates to the key aspects of the physical environment, curriculum and written information.

Whole school training will recognise the need to continue raising awareness for staff and governors on equality issues with reference to the Equality Act 2010.

The Accessibility Plan should be read in conjunction with the following school policies, strategies and documents:

- Behaviour management policy
- Curriculum policies
- Emergency plan
- Health and safety policy

- School improvement plan
- Special educational needs and disabilities (SEND) policy
- Teaching and learning policy

The Accessibility Plan for physical accessibility relates to the Access Audit of the School, which remains the responsibility of the governing body. It may not be feasible to undertake all the the works during the life of this accessibility plan and therefore some items will roll forward into subsequent plans. An accessibility audit will be completed by the school prior to the end of each period covering this plan in order to inform the development of a new Accessibility Plan for the ongoing period.

Equality Impact Assessments will be undertaken as and when school policies are reviewed. The terms of reference for all governors' committees will include the need to consider Equality and Diversity issues as required by the Equality Act 2010.

The Accessibility Plan will be published on the school website.

The Accessibility Plan will be monitored through the Governor Premises Committee.

The Accessibility Plan may be monitored by Ofsted during inspection processes in relation to Schedule 10 of the Equality Act 2010.

It is a requirement that the school's accessibility plan is resourced, implemented, reviewed and revised as necessary and reported on annually. Attached is a set of action plans showing how the school will address the priorities identified in the plan.

The priorities for the Accessibility Plan for our school were identified by:

- The Governing Body
- Head Teacher
- SENDCo
- School Business Manager

A plan of the school buildings is included in this document.

The site was remodelled/rebuilt in 2013/14 and, with the exception of some non-public access doorways (e.g. some office doorways), is completely accessible.

ACCESSIBILITY PLAN

Schedule 21: Action Plan A – Improving Physical Access

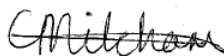
Ref	Question	Recommendations	Time scale	Priority	Cost	Date completed
	Investigate options for allowing disabled access to the stage.		Summer 2023	1	Unknown so far	
	Investigate placing a gate in the fence to allow access to the path from the KS2 playground around to the swimming pool.		Spring 2022	2	Unknown so far	
	Purchase/make socket to fit the pool hoist by the pool for safe use	Pool hoist on loan from SEND Outreach Service	Spring 2022	3	Unknown so far	Spring 2022
	Regularly review accessibility alongside Health and Safety inspections. Report on any developing accessibility issues and resolve in a timely manner.		Ongoing	4	Unknown so far	

Schedule 22: Action Plan B – Improving Curriculum Access

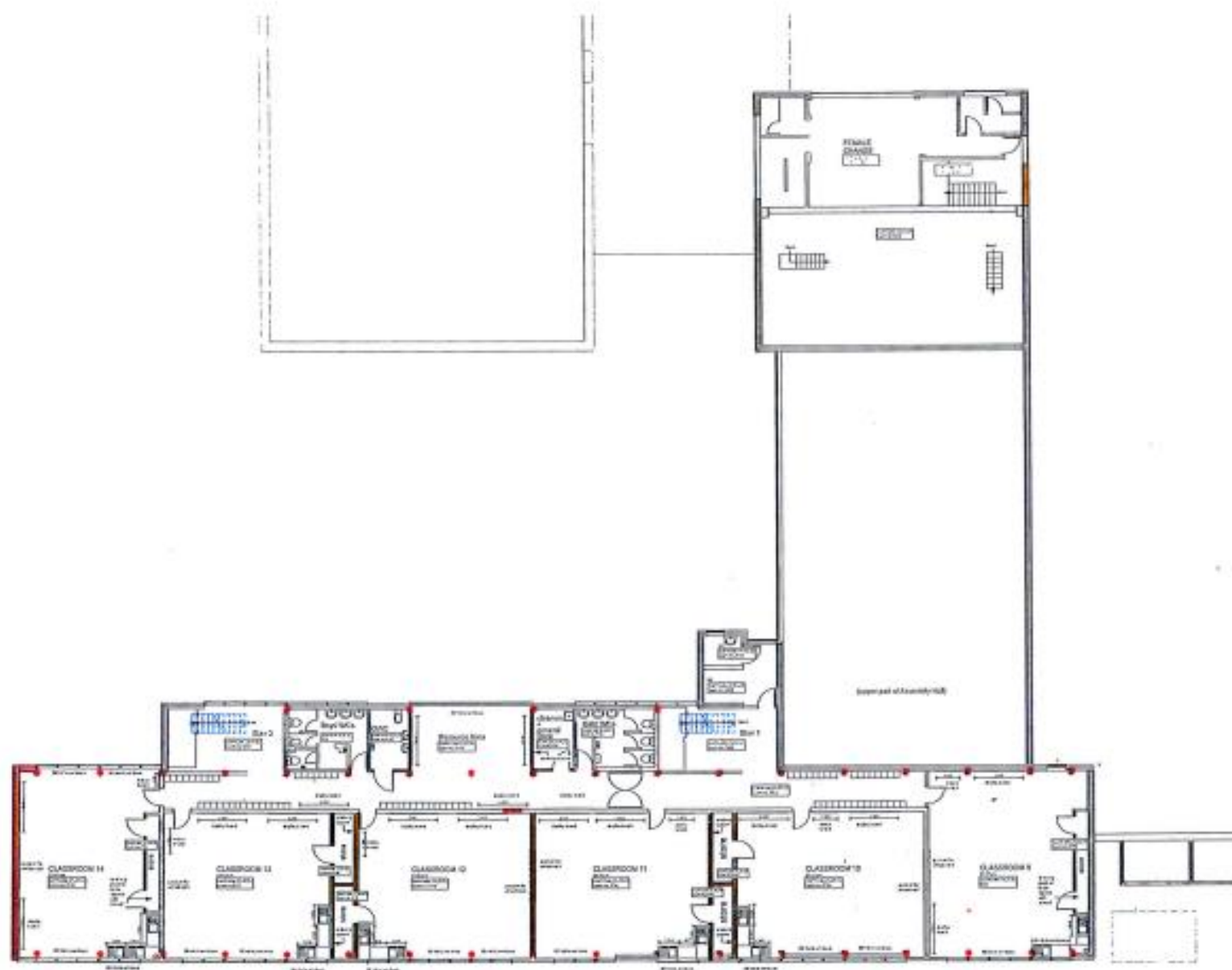
Ref	Question	Recommendations	Time scale	Priority	Cost	Date completed
1	Differentiation in teaching	SLT to monitor quality of differentiation and provision for SEND pupils.	Ongoing	High	N/A	
2	Interventions	Interventions to be monitored and accessed dependent on children's needs	Ongoing	High	N/A	
3	Classrooms are organised to promote the participation and independence of all pupils	SLT to carry out observations to ensure that lessons are planned to meet the needs of all children.	Ongoing	High	N/A	
4	Staff training in the production, implementation and review of TIMS and monitoring systems such as the SV intervention tracker	SENDCo to deliver training to teaching staff and teaching assistants	Spring 2021	High	N/A	Spring 2021 – training delivered yearly as an update and for new staff
5	Staff training in supporting children with SEND. Focus on use of TAs to develop independence and focus on needs of children.	Please see SEND action plan.				

Schedule 23: Action Plan C – Improving the delivery of written information

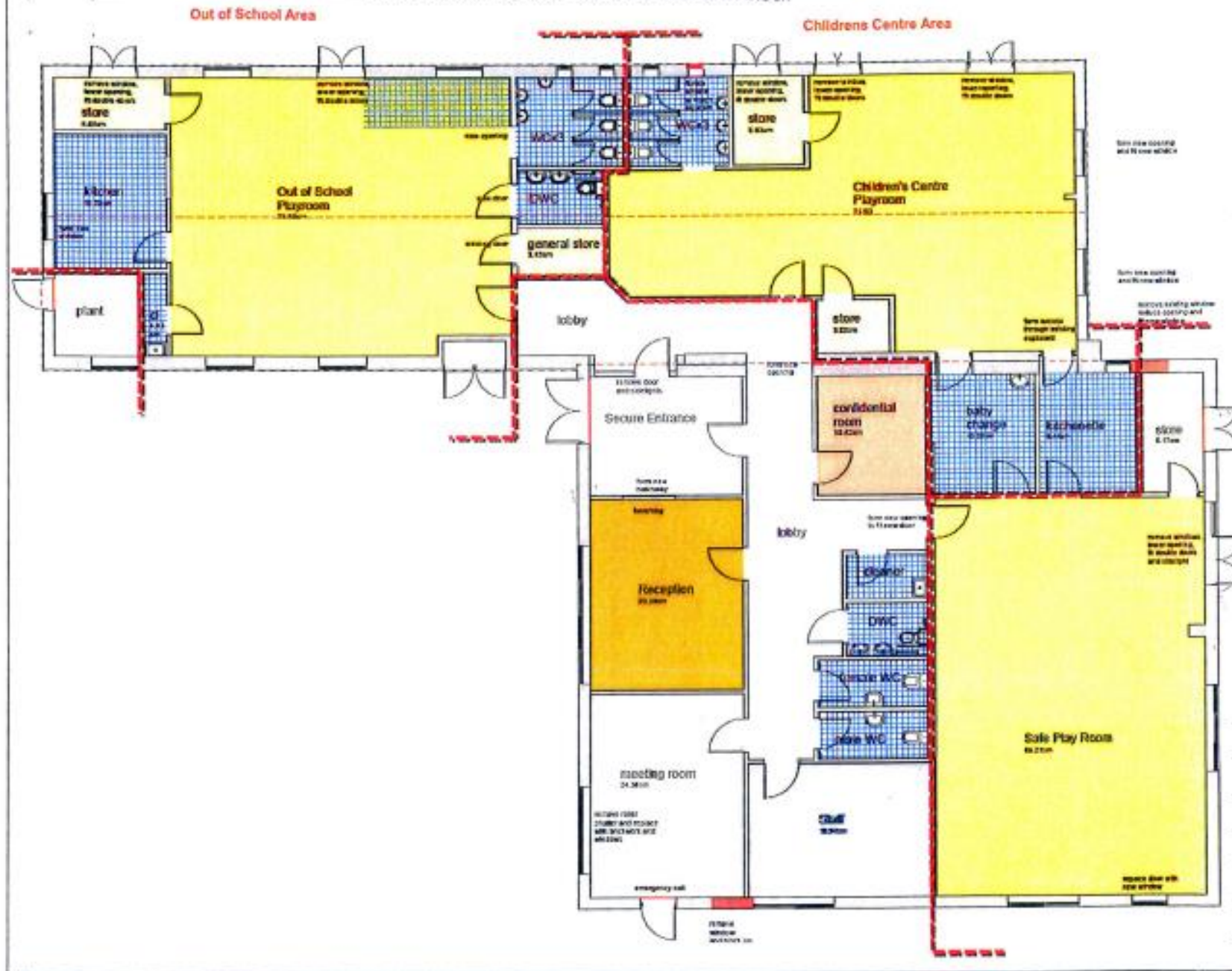
Ref	Question	Recommendations	Time scale	Priority	Cost	Date completed
1	Availability of written material in alternative formats when specifically requested.	The school will endeavour to ensure that written material is available in other formats on a case by case basis.	Ongoing		N/A	
2	Review documentation on website to check accessibility for parents with English as an additional language.	The school will review formats publicised on school website in order to ensure accessibility for parents with English as an additional language.	Ongoing		N/A	

Role	Name	Signature
SENDCo	Corrine Mitcham	
Head Teacher	Jo Tomlins	
Chair of Governors	Paul Weston	

South View CP School – First Floor



South View CP School – Extended Provision Block



South View CP School – Site Map

